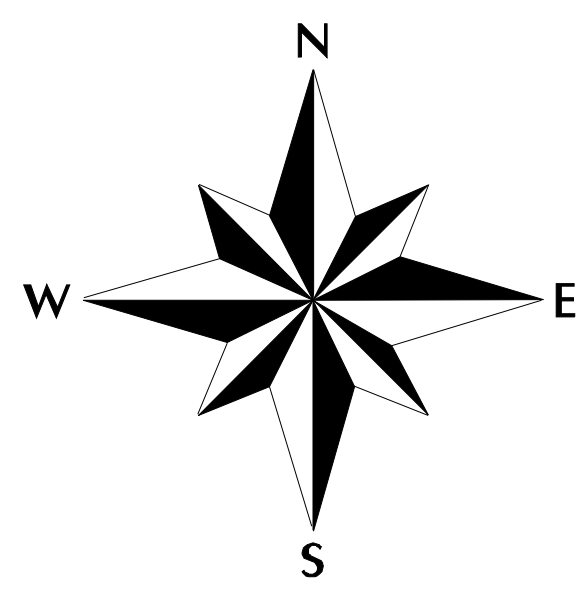


MAP 59-263



Jim Everson
Assessor



0 100 200 300
FEET
(Initially plotted at 1" = 100', or 1:1200)

R 72 W	R 71 W	R 70 W	R 69 W		
22	21	20	29	T 2 S	06 05 04 03 02 01
32	31	30	39	T 3 S	07 08 09 10 11 12
42	41	40	49	T 4 S	18 17 16 15 14 13
52	51	50	59	T 5 S	19 20 21 22 23 24
62	61	60	69	T 6 S	30 29 28 27 26 25
72	71	70	79	T 7 S	31 32 33 34 35 36
82	81	80		T 8 S	
92	91	90		T 9 S	
02	01			T 10 S	

SECTION INDEX

2	1
NW	NE
3	4
SW	SE

QUARTER SECTIONS

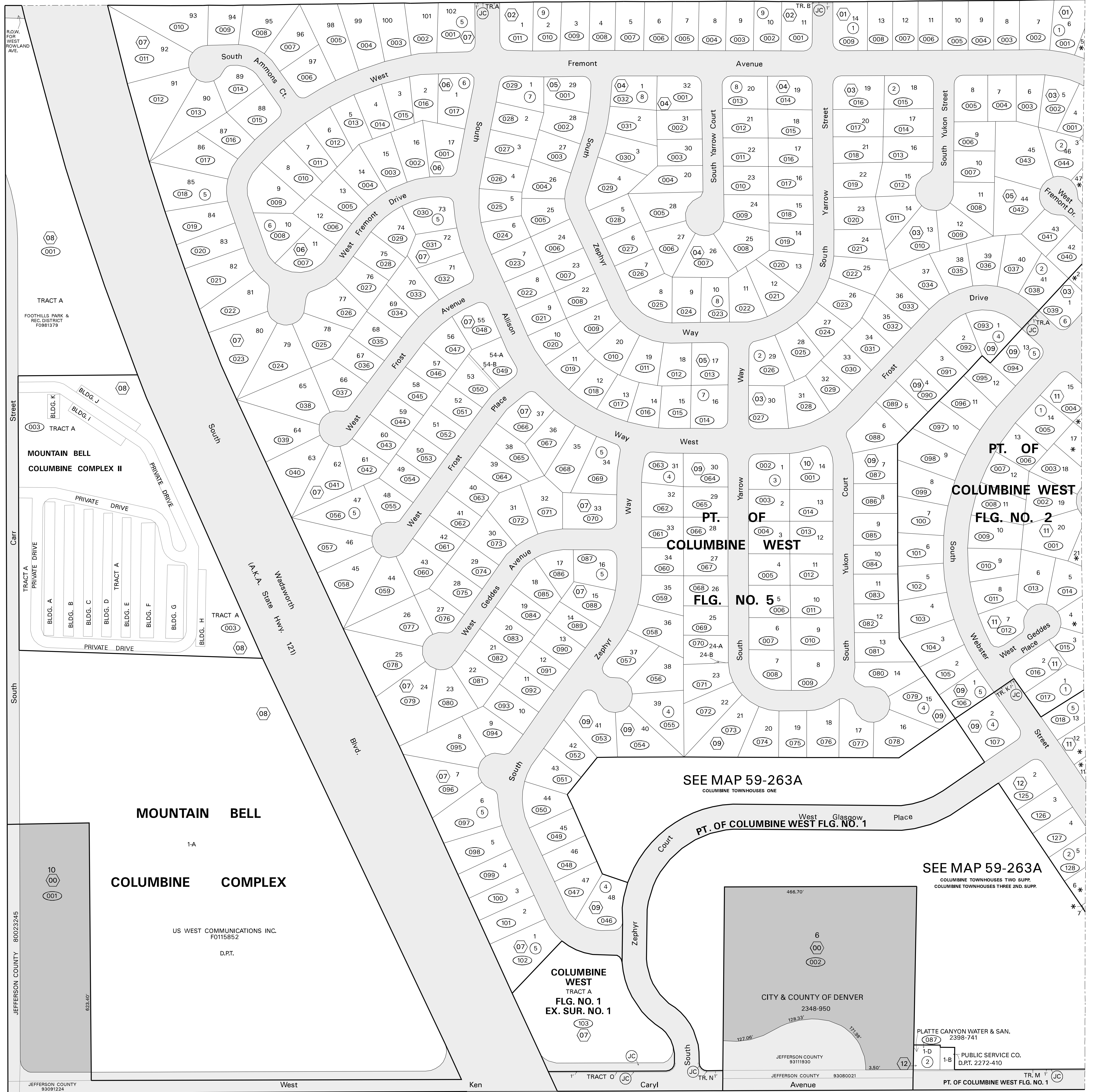
TOWNSHIP INDEX (State Assigned 4-Digit Township Code: 2079)
Parcel Identification Numbers (PINs) in Jefferson County are based on the township, section, and quarter section the parcel falls within. PINs follow the pattern T-SSQ-BB-L-LL. TT is the two-digit township code; SS is the two-digit section number; Q is the quarter section code; BB is the two-digit parcel block number; LL is the three-digit parcel lot number. When a parcel falls within two or more quarter sections, in most cases the PIN will be based on the quarter section (along with its associated township and section) with the most area within the parcel. Township codes, section numbers, and quarter section codes can be found in the indices above. Parcel block numbers are found enclosed in hexagons (⬡) on the map. Parcel lot numbers are found enclosed in ovals (⊖) on the map.

DISCLAIMER
Caution: This map is for assessment purposes only. It is not necessarily accurate by surveying standards. **DO NOT USE FOR LEGAL CONVEYANCE.** Subsequent editions with updated information will be published on a continual basis. Therefore, the information contained on this map may be modified or altered.

KEY

- Section Lines
- Tie Bar Lines
- Subdivision Lines
- Quarter Section/Tie Bar Lines
- Township Boundaries
- County Boundaries
- All Others
- Right of Way, Water & Rail Road (Areas without parcel numbers)
- Metes & Bounds Related (Block numbers 99 & 00)

This map was last updated on Friday February 23, 2007 at 1:46 PM.
<http://www.co.jefferson.co.us/assr/pdi/map59-263.pdf>
Projection Information:
State Plane Coordinate System
Colorado Central Zone (3476)
North American Datum 1983 (NAD83)
GRS1980 Spheroid, Units Feet
Marginalia updated 01/08/08.



JEFFERSON COUNTY 80023245
JEFFERSON COUNTY 93091224
JEFFERSON COUNTY 93080021
JEFFERSON COUNTY 9311930
CITY & COUNTY OF DENVER 2348-950
PLATTE CANYON WATER & SAN. 2398-741
PUBLIC SERVICE CO. D.R.T. 2272-410
PT. OF COLUMBINE WEST FLG. NO. 1
PT. OF COLUMBINE WEST FLG. NO. 2
PT. OF COLUMBINE WEST FLG. NO. 5
PT. OF COLUMBINE WEST FLG. NO. 1
PT. OF COLUMBINE WEST FLG. NO. 1
PT. OF COLUMBINE WEST FLG. NO. 1